

# Airforce™

## Operation and Maintenance Manual

Airforce is manufactured by World Dryer, and since its introduction in 2007 has taken the market by storm.

Using patent-applied technology to force air through 11 nozzles at high speed, the Airforce marries a very low power output of just 1.1kW with a fast dry time of around 12-15 seconds, to provide the lowest energy consumption and running costs of any hand dryer in its class.

Ongoing product development has resulted in an improved Airforce MkIII, with enhanced noise reduction technology meaning a quiet operation of just 79dB. It also comes with a replaceable air intake filter as standard.

Airforce features SteriTouch® antibacterial surface protection all over the white and black units, and on the air outlets of the chrome versions.

Best of all, the Airforce requires no ongoing maintenance or complicated cleaning routines which take up the time of your cleaners - it really is the complete solution.

- Uses less energy than any dryer in its class
- Low emissions
- High speed, low energy - 37,000rpm at just 1.1kW power output
- Lightweight - just 3.2kg
- 5 year on-site guarantee



### General Specifications

Model	Drying Cycle	Dimensions (W x H x D)	Weight
BC0323 White	Auto	8.9" x 10.6" x 6.4"	7.1 lbs
BC0325 Black	Auto	(22.6cm x 27cm x 16.2cm)	(3.2 Kg)
BC0326 Polished	Auto		
BC0327 Brushed	Auto		

### Electrical Specifications

UL LISTED E320188

Model	Type	Electrical Input	Amperage	Watts
J4	Automatic	230VAC-50/60Hz	4.8A	1100

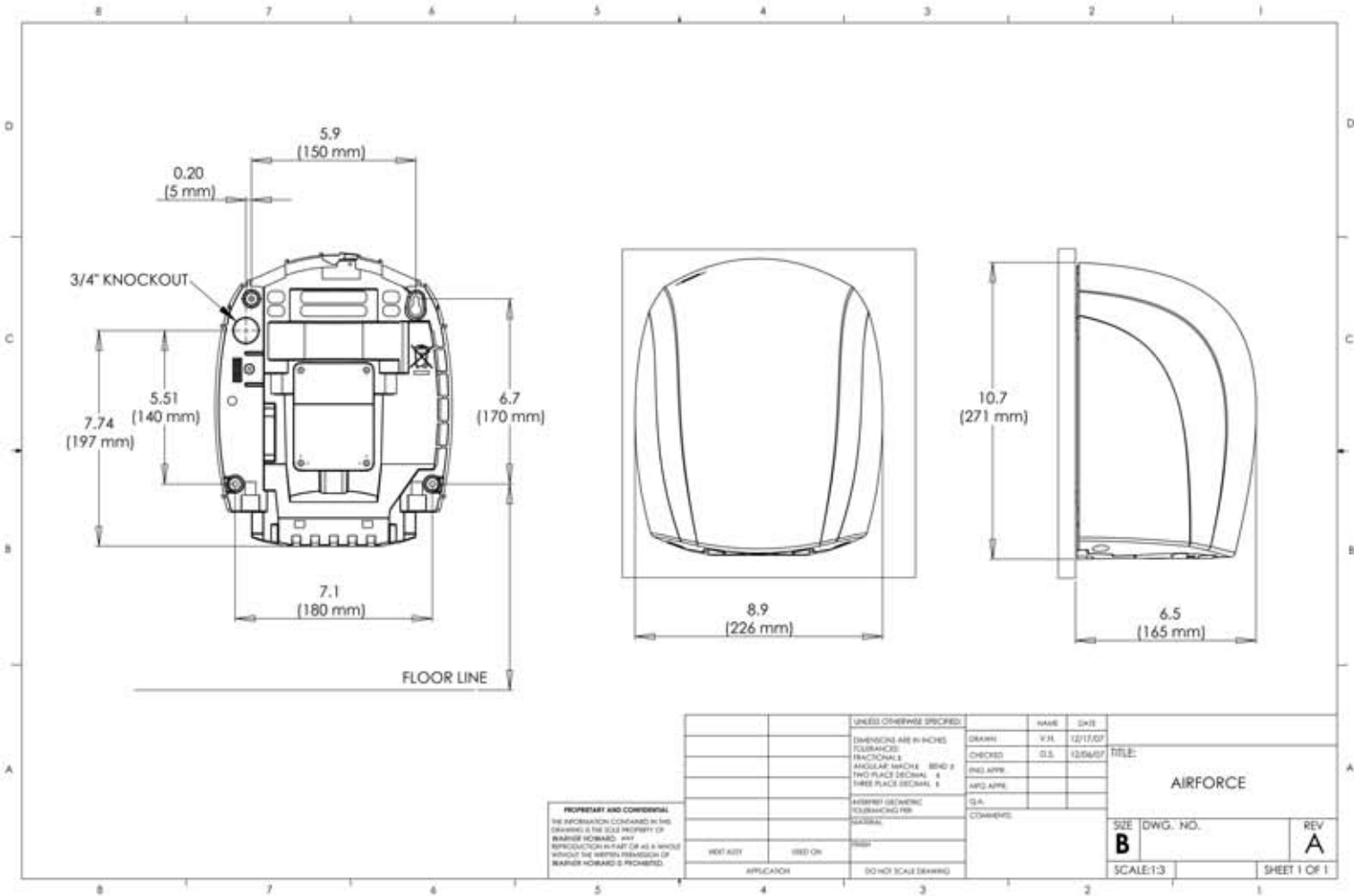
# Installation

Hand dryers require a dedicated 20amp circuit, and must be properly grounded. GFI Circuit protection is recommended.

The dryer must be connected to the supply via a fused double pole isolating switch.

The dryer must be earthed.

All wiring must conform to the current IEE regulations.



PROPRIETARY AND CONFIDENTIAL  
 THE INFORMATION CONTAINED IN THIS  
 DRAWING IS THE SOLE PROPERTY OF  
 BRANIFF HOWARD. ANY  
 REPRODUCTION IN PART OR AS A WHOLE  
 WITHOUT THE WRITTEN PERMISSION OF  
 BRANIFF HOWARD IS PROHIBITED.

UNLESS OTHERWISE SPECIFIED:		NAME	DATE	TITLE
DIMENSIONS ARE IN INCHES FRACTIONS DECIMALS ANGULAR DIMENSIONS TWO PLACE DECIMALS THREE PLACE DECIMALS		DRAWN	V.J.A.	
HIDDEN DIMENSIONS TO BE SHOWN PER STANDARD		CHECKED	G.S.	12/26/07
NEXT SIZE		INCH	ON	
APPLICATION		DO NOT SCALE DRAWING		
COMMENTS				
SCALE: 1:3				
SIZE DWG. NO.			REV	
B			A	
SHEET 1 OF 1				

AIRFORCE

## Maintenance

1. Remove fuse or shut off power to the dryer at fuse box.
2. With Allen wrench supplied with dryer, turn clockwise two Allen screws from bottom side of dryer case.
3. Remove dryer cover.

## CLEANING INSTRUCTIONS

Read complete instruction before proceeding. Under normal use, cleaning the Dryer once a year will keep it in good operating condition. If the washroom traffic is heavier than normal, the cleaning should be done every 6 months. Lint and dust build up inside the dryer can result in damage to motor.

1. Turn off dryer at circuit breaker or fuse panel.
2. Turn clockwise two cover mounting screws from dryer cover using security hex key provided. Support cover while removing screws.
3. Vacuum out dirt from blower and housing. Use caution not to damage wires or circuit boards.
4. The motor inlet cover may be removed by unscrewing the (4) screws. This allows access to the motor for cleaning or replacement.
5. Use soft-medium bristle ½” paint brush to clean dust and dirt from motor.
6. Replace cover. Place cover squarely over base and push flush to wall. Turn cover mounting screws counter-clockwise and tighten until snug. Do not over tighten.

## Troubleshooting Chart

Symptom	Possible Cause(s)	Corrective Action
Dryer fails to start.	A) No power to unit. B) Defective motor.	Check power to unit and connections. Replace motor.
Dryer will not shut off or runs 20 seconds, then will not re-start.	Sensor is dirty, defective or there is a reflection.	1. Check infra-red eye for dirt or damage. Use plastic lenses cleaning solution and a soft cloth. Dry lens with a soft cloth. 2. Make sure that sensor is not getting a reflection from another object. 3. After electricity has been applied to the dryer, it should turn on within few seconds. Test by placing hands 3 to 6 inches below the nozzle. 4. Replace circuit boards.

### **o3 solutions ltd**

centre house  
79 chichester st  
belfast  
bt1 4je

0800 458 7416  
+44 28 9065 6552

**[www.o3solutions.com](http://www.o3solutions.com)**